

082M Series

Filtered Medical Power Entry Modules with Fuse and Switch



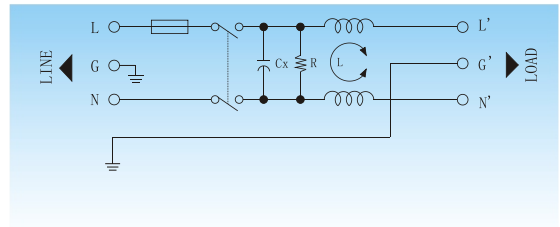
Features

Low leakage current, compact integrated power entry module with safety fuse and on/off switch. Easy to use and install with fast on tabs and other termination options also available.



Typical Applications

Medical equipment, compact electronic equipment and applications requiring low leakage current .



✓ Electrical Schematic



Specifications :

Rated Voltage Max. :	250 VAC
Rated Current:	1- 10A @40°C
Operating Frequency :	50/60 Hz
Leakage Current :	
@250VAC 50Hz	5 μ A MAX.
@115VAC 60Hz	2 μ A MAX.
Hipot Rating (1minute) :	
Line to Line:	1450 VDC
Line to Ground:	2250 VDC
Climatic Category:	25/85/21

Model No.	Rated Current(A) @40°C	Mechanical Diagram	Terminations	
			In	Out
LCR 082M.00101.00	1	A	IEC Inlet Socket	Faston 6.35*0.8
LCR 082M.00301.00	3	A	IEC Inlet Socket	Faston 6.35*0.8
LCR 082M.00601.00	6	A	IEC Inlet Socket	Faston 6.35*0.8
LCR 082M.01001.00	10	A	IEC Inlet Socket	Faston 6.35*0.8

⚠ Above filters can be customized upon request.



082M Series Insertion loss measured in a 50 ohms system



Common Mode Insertion Loss (dB)

Frequency (MHz.)	0.05	0.1	0.15	0.5	1	5	10	30
Filter P/N								
LCR 082M.00101.00	32	38	41	49	51	33	27	17
LCR 082M.00301.00	28	34	37	45	43	29	23	15
LCR 082M.00601.00	16	22	25	31	33	29	23	15
LCR 082M.01001.00	10	16	18	24	26	16	10	8

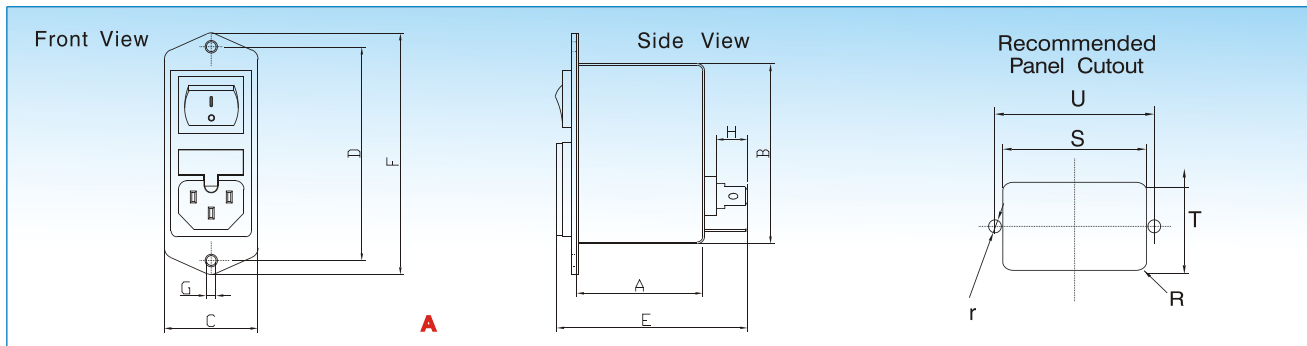


Differential Mode Insertion Loss (dB)

Frequency (MHz.)	0.05	0.1	0.15	0.5	1	5	10	30
Filter P/N								
LCR 082M Series	12	14	18	28	32	55	50	50



Mechanical Outlines:



Mechanical Dimensions:

Model No.	A	B	C	D	E	F	G	H	R	S	T	U	r
LCR 082M.00101.00	43.7	60.6	32.0	72.0	60.0	82.0	2XΦ4*2	7.6	2.5	61	21.5	72.0	2.1
LCR 082M.00301.00	43.7	60.6	32.0	72.0	60.0	82.0	2XΦ4*2	7.6	2.5	61	21.5	72.0	2.1
LCR 082M.00601.00	43.7	60.6	32.0	72.0	60.0	82.0	2XΦ4*2	7.6	2.5	61	21.5	72.0	2.1
LCR 082M.01001.00	43.7	60.6	32.0	72.0	60.0	82.0	2XΦ4*2	7.6	2.5	61	21.5	72.0	2.1

[返回](#) Back to Table of Cotent

⚠ 1 inch=25.4mm (All dimensions in mm).