

# 084M Series

Filtered Medical Power Entry Modules with 2 Fuses and a Switch



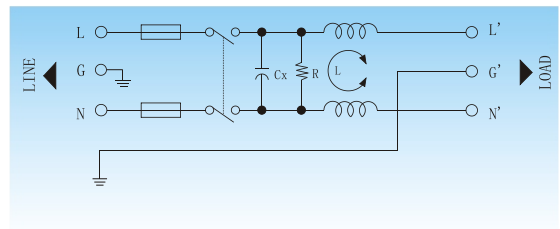
## Features

Low leakage current, double fuse, compact, integrated power entry module. Safety fuse on both line and neutral. On/off switch. Easy to use and install. Fast on tabs and other termination options also available.



## Typical Applications

Medical and compact electronic equipment with high safety and protection requirements. Applications requiring low leakage current.



✓ Electrical Schematic



## Specifications:

<b>Rated Voltage Max. :</b>	250 VAC
<b>Rated Current:</b>	1- 10A @40°C
<b>Operating Frequency :</b>	50/60 Hz
<b>Leakage Current :</b>	
@250VAC 50Hz	5 $\mu$ A MAX.
@115VAC 60Hz	2 $\mu$ A MAX.
<b>Hipot Rating (1minute) :</b>	
Line to Line:	1450 VDC
Line to Ground:	2250 VDC
<b>Climatic Category:</b>	25/85/21

Model No.	Rated Current(A) @40°C	Mechanical Diagram	Terminations	
			In	Out
LCR 084M.00101.00	1	A	IEC Inlet Socket	Faston 6.35*0.8
LCR 084M.00301.00	3	A	IEC Inlet Socket	Faston 6.35*0.8
LCR 084M.00601.00	6	A	IEC Inlet Socket	Faston 6.35*0.8
LCR 084M.01001.00	10	A	IEC Inlet Socket	Faston 6.35*0.8

⚠ Above filters can be customized upon request.



## 084M Series Insertion loss measured in a 50 ohms system



### Common Mode Insertion Loss (dB)

Frequency (MHz.)	0.05	0.1	0.15	0.5	1	5	10	30
<b>Filter P/N</b>								
LCR 084M.00101.00	32	38	41	49	51	33	27	17
LCR 084M.00301.00	28	34	37	45	43	29	23	15
LCR 084M.00601.00	16	22	25	31	33	29	23	15
LCR 084M.01001.00	10	16	18	24	26	16	10	8

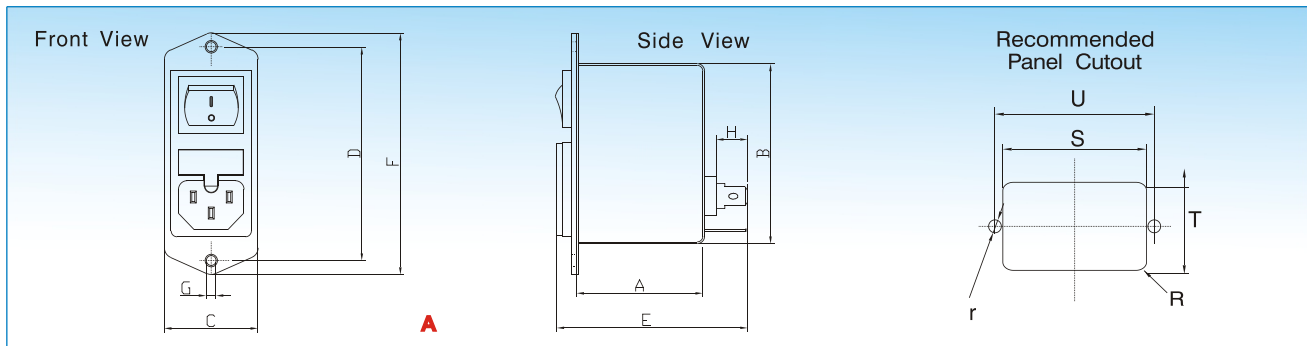


### Differential Mode Insertion Loss (dB)

Frequency (MHz.)	0.05	0.1	0.15	0.5	1	5	10	30
<b>Filter P/N</b>								
LCR 084M Series	12	14	18	28	32	55	50	50



### Mechanical Outlines:



### Mechanical Dimensions:

Model No.	A	B	C	D	E	F	G	H	R	S	T	U	r
LCR 084M.00101.00	43.7	60.6	32.0	72.0	60.0	82.0	2XΦ4*2	7.6	2.5	61	21.5	72.0	2.1
LCR 084M.00301.00	43.7	60.6	32.0	72.0	60.0	82.0	2XΦ4*2	7.6	2.5	61	21.5	72.0	2.1
LCR 084M.00601.00	43.7	60.6	32.0	72.0	60.0	82.0	2XΦ4*2	7.6	2.5	61	21.5	72.0	2.1
LCR 084M.01001.00	43.7	60.6	32.0	72.0	60.0	82.0	2XΦ4*2	7.6	2.5	61	21.5	72.0	2.1

[返回](#) Back to Table of Cotent

⚠ 1 inch=25.4mm (All dimensions in mm).