

085 Series

General Purpose Filtered Power Entry Modules with Switch



Features

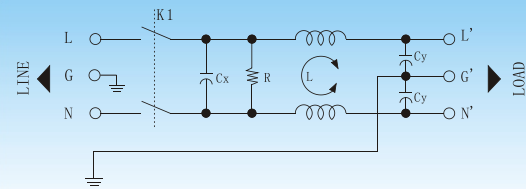
Compact integrated power entry module with on/off switch. Fast on tabs and other termination options also available.

This item is currently under design. for details, please contact LCR.



Typical Applications

Compact electronic equipment .



✓ Electrical Schematic



Specifications :

Rated Voltage Max. :	250 VAC
Rated Current:	1- 10A @40°C
Operating Frequency :	50/60 Hz
Leakage Current :	
@250VAC 50Hz	0.38 mA MAX.
@115VAC 60Hz	0.19 mA MAX.
Hipot Rating (1minute) :	
Line to Line:	1450 VDC
Line to Ground:	2250 VDC
Climatic Category:	25/85/21

Model No.	Rated Current(A) @40°C	Mechanical Diagram	Terminations	
			In	Out
LCR 085.00101.00	1	A	IEC Inlet Socket	Faston 6.35*0.8
LCR 085.00301.00	3	A	IEC Inlet Socket	Faston 6.35*0.8
LCR 085.00601.00	6	A	IEC Inlet Socket	Faston 6.35*0.8
LCR 085.01001.00	10	A	IEC Inlet Socket	Faston 6.35*0.8

⚠ Above filters can be customized upon request.



085 Series Insertion loss measured in a 50 ohms system



Common Mode Insertion Loss (dB)

Frequency (MHz.)	0.05	0.1	0.15	0.5	1	5	10	30
Filter P/N								
LCR 085.00101.00	32	38	41	53	56	55	55	50
LCR 085.00301.00	28	34	37	49	51	52	50	50
LCR 085.00601.00	16	22	25	35	38	48	48	45
LCR 085.01001.00	10	16	18	26	28	42	42	40



Differential Mode Insertion Loss (dB)

Frequency (MHz.)	0.05	0.1	0.15	0.5	1	5	10	30
Filter P/N								
LCR 085 Series	12	14	18	28	32	55	50	50



Mechanical Outlines:

This item is currently under design.
for details, please contact LCR.



Mechanical Dimensions:

Model No.	A	B	C	D	E	F	G	H
LCR 085.00101.00	43.7	60.6	32.0	72.0	60.0	82.0	2XΦ4*2	7.6
LCR 085.00301.00	43.7	60.6	32.0	72.0	60.0	82.0	2XΦ4*2	7.6
LCR 085.00601.00	43.7	60.6	32.0	72.0	60.0	82.0	2XΦ4*2	7.6
LCR 085.01001.00	43.7	60.6	32.0	72.0	60.0	82.0	2XΦ4*2	7.6

[返回](#) [Back to Table of Cotent](#)

 1 inch=25.4mm (All dimensions in mm).