

# 085M Series

## Filtered Medical Power Entry Modules with Switch



### Features

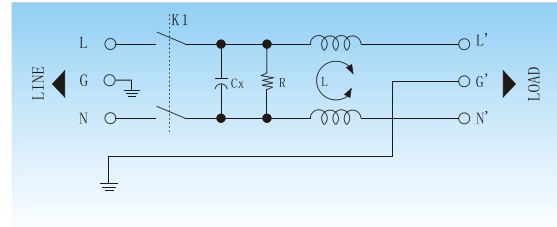
Low leakage current, compact, integrated power entry module with on/off switch. Fast on tabs and other termination options also available.

This item is currently under design. for details, please contact LCR.



### Typical Applications

Medical and compact electronic equipment and applications requiring low leakage current .



✓ Electrical Schematic



### Specifications :

<b>Rated Voltage Max. :</b>	250 VAC
<b>Rated Current:</b>	1- 10A @40°C
<b>Operating Frequency :</b>	50/60 Hz
<b>Leakage Current :</b>	
@250VAC 50Hz	5 $\mu$ A MAX.
@115VAC 60Hz	2 $\mu$ A MAX.
<b>Hipot Rating (1minute) :</b>	
Line to Line:	1450 VDC
Line to Ground:	2250 VDC
<b>Climatic Category:</b>	25/85/21

Model No.	Rated Current(A) @40°C	Mechanical Diagram	Terminations	
			In	Out
LCR 085M.00101.00	1	A	IEC Inlet Socket	Faston 6.35*0.8
LCR 085M.00301.00	3	A	IEC Inlet Socket	Faston 6.35*0.8
LCR 085M.00601.00	6	A	IEC Inlet Socket	Faston 6.35*0.8
LCR 085M.01001.00	10	A	IEC Inlet Socket	Faston 6.35*0.8

⚠ Above filters can be customized upon request.



## 085M Series Insertion loss measured in a 50 ohms system



### Common Mode Insertion Loss (dB)

Frequency (MHz.)	0.05	0.1	0.15	0.5	1	5	10	30
<b>Filter P/N</b>								
LCR 085M.00101.00	32	38	41	49	51	33	27	17
LCR 085M.00301.00	28	34	37	45	43	29	23	15
LCR 085M.00601.00	16	22	25	31	33	29	23	15
LCR 085M.01001.00	10	16	18	24	26	16	10	8



### Differential Mode Insertion Loss (dB)

Frequency (MHz.)	0.05	0.1	0.15	0.5	1	5	10	30
<b>Filter P/N</b>								
LCR 085M Series	12	14	18	28	32	55	50	50



### Mechanical Outlines:

This item is currently under design.  
for details, please contact LCR.



### Mechanical Dimensions:

Model No.	A	B	C	D	E	F	G	H
LCR 085M.00101.00	43.7	60.6	32.0	72.0	60.0	82.0	2XΦ4*2	7.6
LCR 085M.00301.00	43.7	60.6	32.0	72.0	60.0	82.0	2XΦ4*2	7.6
LCR 085M.00601.00	43.7	60.6	32.0	72.0	60.0	82.0	2XΦ4*2	7.6
LCR 085M.01001.00	43.7	60.6	32.0	72.0	60.0	82.0	2XΦ4*2	7.6

返回

Back to  
Table of Cotent

 1 inch=25.4mm (All dimensions in mm).