

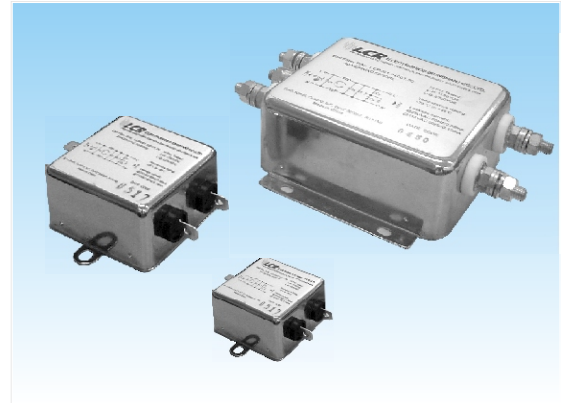
090 Series

Single Phase Single Stage General Purpose Filters



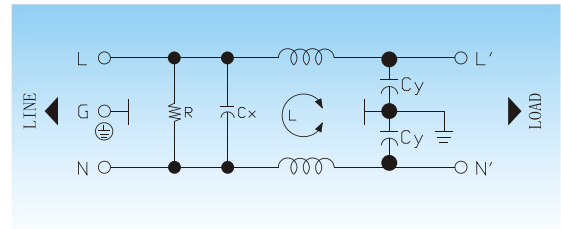
Features

Compact, single phase, general purpose power line filter. Fast on tabs and other termination options also available.



Typical Applications

White goods, industrial equipment, power supply systems and controls.



✓ Electrical Schematic



Specifications :

Rated Voltage Max. :	250 VAC
Rated Current:	1- 40A @40°C
Operating Frequency :	50/60 Hz
Leakage Current :	
@250VAC 50Hz	0.38 mA MAX.
@115VAC 60Hz	0.19 mA MAX.
Hipot Rating (1minute) :	
Line to Line:	1450 VDC
Line to Ground:	2250 VDC
Climatic Category:	25/85/21

Model No.	Rated Current(A) @40°C	Mechanical Diagram	Terminations	
			In	Out
LCR 090.00101.00	1	A	Faston 6.35*0.8	Faston 6.35*0.8
LCR 090.00301.00	3	A	Faston 6.35*0.8	Faston 6.35*0.8
LCR 090.00601.00	6	A	Faston 6.35*0.8	Faston 6.35*0.8
LCR 090.01001.00	10	A	Faston 6.35*0.8	Faston 6.35*0.8
LCR 090.01501.00	15	A	Faston 6.35*0.8	Faston 6.35*0.8
LCR 090.02001.00	20	A	Faston 6.35*0.8	Faston 6.35*0.8
LCR 090.02501.00	25	B	M6 screw	M6 screw
LCR 090.03001.00	30	B	M6 screw	M6 screw
LCR 090.04001.00	40	B	M6 screw	M6 screw

⚠ Above filters can be customized upon request.



090 Series Insertion loss measured in a 50 ohms system



Common Mode Insertion Loss (dB)

Frequency (MHz.)	0.05	0.1	0.15	0.5	1	5	10	30
Filter P/N								
LCR 090.00101.00	16	23	27	39	50	55	55	50
LCR 090.00301.00	15	21	15	37	50	50	50	45
LCR 090.00601.00	11	17	21	33	40	45	45	40
LCR 090.01001.00	9	15	19	31	39	45	45	40
LCR 090.01501.00	6	12	15	27	36	40	40	40
LCR 090.02001.00	6	12	15	27	36	40	40	40
LCR 090.02501.00	4	9	13	24	34	38	38	35
LCR 090.03001.00	4	9	13	24	34	38	38	35
LCR 090.04001.00	2	6	9	21	29	30	30	30

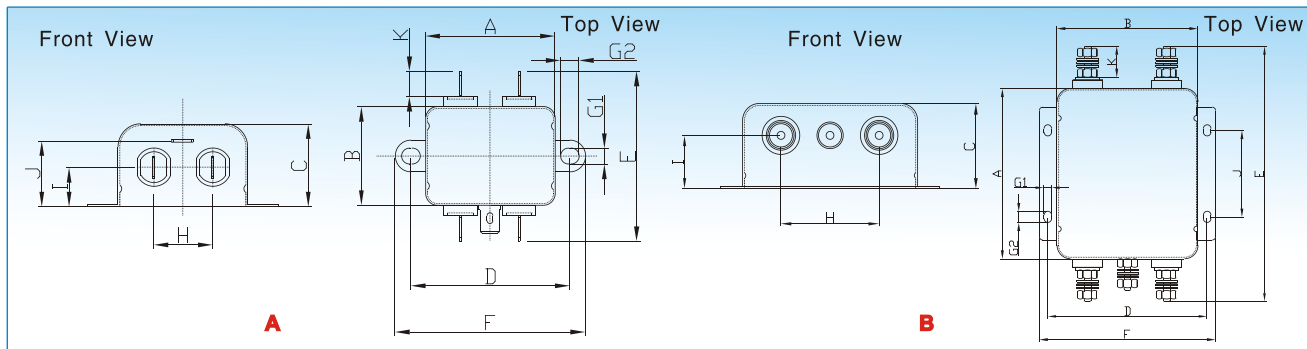


Differential Mode Insertion Loss (dB)

Frequency (MHz.)	0.05	0.1	0.15	0.5	1	5	10	30
Filter P/N								
LCR 090 Series	-	1	3	11	17	30	30	30



Mechanical Outlines:



Mechanical Dimensions:

Model No.	A	B	C	D	E	F	G	H	I	J	K
LCR 090.00101.00	44.0	33.0	29.0	54.0	56.8	64.0	2Xφ5.3*6.3	20.0	15.0	22.0	8.5
LCR 090.00301.00	44.0	33.0	29.0	54.0	56.8	64.0	2Xφ5.3*6.3	20.0	15.0	22.0	8.5
LCR 090.00601.00	44.0	33.0	29.0	54.0	56.8	64.0	2Xφ5.3*6.3	20.0	15.0	22.0	8.5
LCR 090.01001.00	44.0	33.0	29.0	54.0	56.8	64.0	2Xφ5.3*6.3	20.0	15.0	22.0	8.5
LCR 090.01501.00	51.0	52.0	29.0	61.0	75.8	71.0	2Xφ5.3*6.3	20.0	15.0	22.0	8.5
LCR 090.02001.00	51.0	52.0	29.0	61.0	75.8	71.0	2Xφ5.3*6.3	20.0	15.0	22.0	8.5
LCR 090.02501.00	100.0	84.0	40.0	95.0	150.6	105.0	4Xφ4.5*6.5	44.0	25.0	50.8	20.5
LCR 090.03001.00	100.0	84.0	40.0	95.0	150.6	105.0	4Xφ4.5*6.5	44.0	25.0	50.8	20.5
LCR 090.04001.00	100.0	84.0	40.0	95.0	150.6	105.0	4Xφ4.5*6.5	44.0	25.0	50.8	20.5

⚠ 1 inch=25.4mm (All dimensions in mm)。

返回

Back to Table of Content

