

090M Series

Single Phase Single Stage Medical Filters



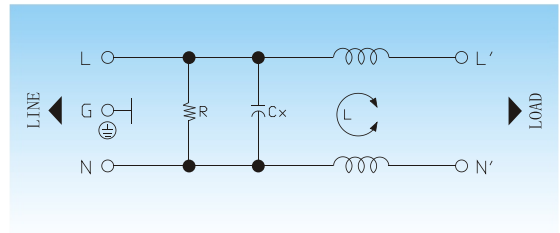
Features

Low leakage current, compact, power line filter.
Fast on tabs and other termination options also available.



Typical Applications

White goods with safety requirements, medical equipment, power supplies and controls.



✓ Electrical Schematic



Specifications :

Rated Voltage Max. :	250 VAC
Rated Current:	1- 40A @40°C
Operating Frequency :	50/60 Hz
Leakage Current :	
@250VAC 50Hz	5 μ A MAX.
@115VAC 60Hz	2 μ A MAX.
Hipot Rating (1minute) :	
Line to Line:	1450 VDC
Line to Ground:	2250 VDC
Climatic Category:	25/85/21

Model No.	Rated Current(A) @40°C	Mechanical Diagram	Terminations	
			In	Out
LCR 090M.00101.00	1	A	Faston 6.35*0.8	Faston 6.35*0.8
LCR 090M.00301.00	3	A	Faston 6.35*0.8	Faston 6.35*0.8
LCR 090M.00601.00	6	A	Faston 6.35*0.8	Faston 6.35*0.8
LCR 090M.01001.00	10	A	Faston 6.35*0.8	Faston 6.35*0.8
LCR 090M.01501.00	15	A	Faston 6.35*0.8	Faston 6.35*0.8
LCR 090M.02001.00	20	A	Faston 6.35*0.8	Faston 6.35*0.8
LCR 090M.02501.00	25	B	M6 screw	M6 screw
LCR 090M.03001.00	30	B	M6 screw	M6 screw
LCR 090M.04001.00	40	B	M6 screw	M6 screw

⚠ Above filters can be customized upon request.



090M Series Insertion loss measured in a 50 ohms system



Common Mode Insertion Loss (dB)

Frequency (MHz.)	0.05	0.1	0.15	0.5	1	5	10	30
Filter P/N								
LCR 090M.00101.00	20	26	30	40	45	50	50	45
LCR 090M.00301.00	20	26	30	41	48	50	50	45
LCR 090M.00601.00	16	20	25	35	42	40	40	40
LCR 090M.01001.00	13	18	22	33	38	35	35	35
LCR 090M.01501.00	10	16	19	29	35	30	30	30
LCR 090M.02001.00	10	16	19	29	35	30	30	30
LCR 090M.02501.00	8	12	16	27	33	30	30	30
LCR 090M.03001.00	5	10	12	23	30	28	28	28
LCR 090M.04001.00	5	10	12	23	30	28	28	28

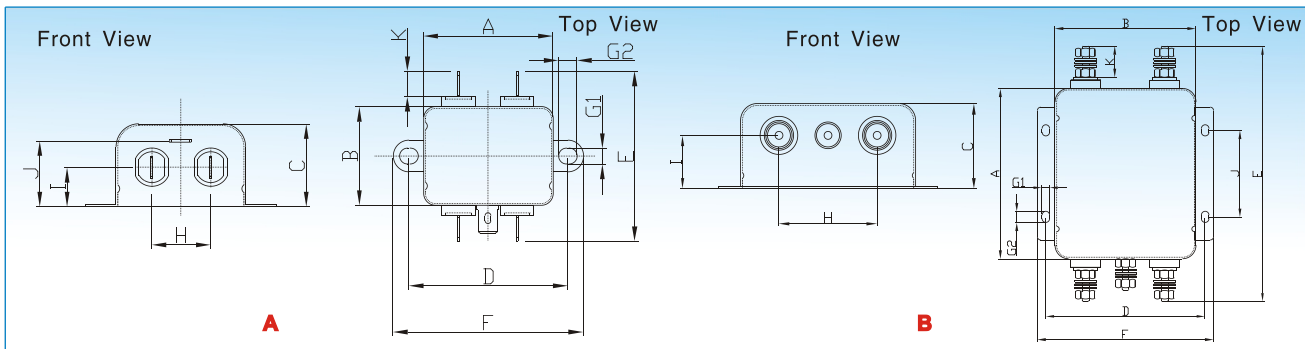


Differential Mode Insertion Loss (dB)

Frequency (MHz.)	0.05	0.1	0.15	0.5	1	5	10	30
Filter P/N								
LCR 090M Series	2	5	8	17	23	35	35	30



Mechanical Outlines:



Mechanical Dimensions:

Model No.	A	B	C	D	E	F	G	H	I	J	K
LCR 090M.00101.00	44.0	33.0	29.0	54.0	56.8	64.0	2Xφ5.3*6.3	20.0	15.0	22.0	8.5
LCR 090M.00301.00	44.0	33.0	29.0	54.0	56.8	64.0	2Xφ5.3*6.3	20.0	15.0	22.0	8.5
LCR 090M.00601.00	44.0	33.0	29.0	54.0	56.8	64.0	2Xφ5.3*6.3	20.0	15.0	22.0	8.5
LCR 090M.01001.00	44.0	33.0	29.0	54.0	56.8	64.0	2Xφ5.3*6.3	20.0	15.0	22.0	8.5
LCR 090M.01501.00	51.0	52.0	29.0	61.0	75.8	71.0	2Xφ5.3*6.3	20.0	14.0	22.0	8.5
LCR 090M.02001.00	51.0	52.0	29.0	61.0	75.8	71.0	2Xφ5.3*6.3	20.0	14.0	22.0	8.5
LCR 090M.02501.00	100.0	84.0	40.0	95.0	150.6	105.0	4Xφ4.5*6.5	44.0	25.0	50.8	20.5
LCR 090M.03001.00	100.0	84.0	40.0	95.0	150.6	105.0	4Xφ4.5*6.5	44.0	25.0	50.8	20.5
LCR 090M.04001.00	100.0	84.0	40.0	95.0	150.6	105.0	4Xφ4.5*6.5	44.0	25.0	50.8	20.5

⚠ 1 inch=25.4mm (All dimensions in mm).

