

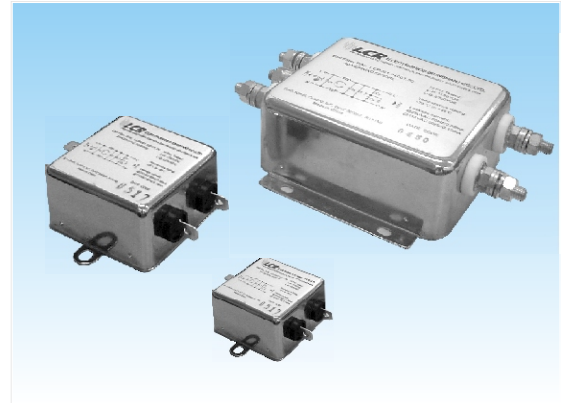
# 091 Series

## Single Phase Single Stage High Performance Filters



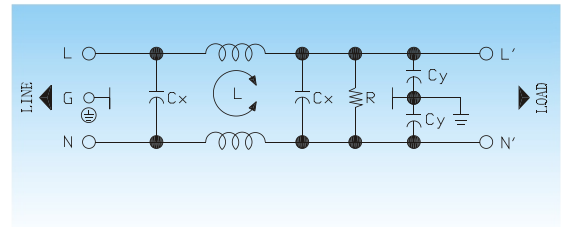
### Features

High performance general purpose power line filter.  
Fast on tabs and other termination options also available.



### Typical Applications

White goods, single phase industrial equipment, power supply systems, controls and communication systems.



✓ Electrical Schematic



### Specifications :

<b>Rated Voltage Max. :</b>	250 VAC
<b>Rated Current:</b>	1- 40A @40°C
<b>Operating Frequency :</b>	50/60 Hz.
<b>Leakage Current :</b>	
@250VAC 50Hz	0.38 mA MAX.
@115VAC 60Hz	0.19 mA MAX.
<b>Hipot Rating (1minute) :</b>	
Line to Line:	1450 VDC
Line to Ground:	2250 VDC
<b>Climatic Category:</b>	25/85/21

Model No.	Rated Current(A) @40°C	Mechanical Diagram	Terminations	
			In	Out
LCR 091.00101.00	1	A	Faston 6.35*0.8	Faston 6.35*0.8
LCR 091.00301.00	3	A	Faston 6.35*0.8	Faston 6.35*0.8
LCR 091.00601.00	6	A	Faston 6.35*0.8	Faston 6.35*0.8
LCR 091.01001.00	10	A	Faston 6.35*0.8	Faston 6.35*0.8
LCR 091.01501.00	15	A	Faston 6.35*0.8	Faston 6.35*0.8
LCR 091.02001.00	20	A	Faston 6.35*0.8	Faston 6.35*0.8
LCR 091.02501.00	25	B	M6 screw	M6 screw
LCR 091.03001.00	30	B	M6 screw	M6 screw
LCR 091.04001.00	40	B	M6 screw	M6 screw

⚠ Above filters can be customized upon request.



## 091 Series Insertion loss measured in a 50 ohms system



### Common Mode Insertion Loss (dB)

Frequency (MHz.)	0.05	0.1	0.15	0.5	1	5	10	30
<b>Filter P/N</b>								
LCR 091.00101.00	16	23	27	39	50	55	55	50
LCR 091.00301.00	15	21	15	37	50	50	50	45
LCR 091.00601.00	11	17	21	33	40	45	45	40
LCR 091.01001.00	9	15	19	31	39	45	45	40
LCR 091.01501.00	6	12	15	27	36	40	40	40
LCR 091.02001.00	6	12	15	27	36	40	40	40
LCR 091.02501.00	4	9	13	24	34	38	38	35
LCR 091.03001.00	4	9	13	24	34	38	38	35
LCR 091.04001.00	2	6	9	21	29	30	30	30

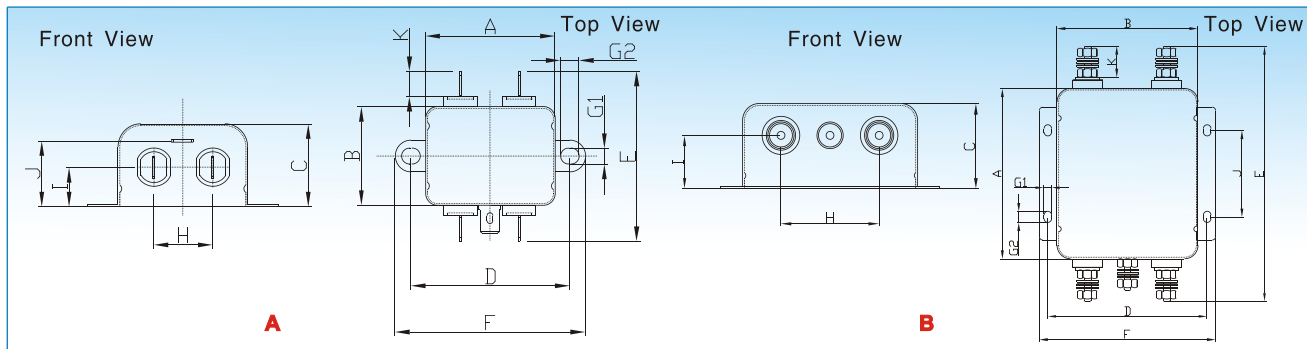


### Differential Mode Insertion Loss (dB)

Frequency (MHz.)	0.05	0.1	0.15	0.5	1	5	10	30
<b>Filter P/N</b>								
LCR 091 Series	3	9	12	12	30	35	35	35



### Mechanical Outlines:



### Mechanical Dimensions:

Model No.	A	B	C	D	E	F	G	H	I	J	K
LCR 091.00101.00	44.0	33.0	29.0	54.0	56.8	64.0	2Xφ5.3*6.3	20.0	15.0	22.0	8.5
LCR 091.00301.00	44.0	33.0	29.0	54.0	56.8	64.0	2Xφ5.3*6.3	20.0	15.0	22.0	8.5
LCR 091.00601.00	44.0	33.0	29.0	54.0	56.8	64.0	2Xφ5.3*6.3	20.0	15.0	22.0	8.5
LCR 091.01001.00	51.0	52.0	29.0	61.0	75.8	71.0	2Xφ5.3*6.3	20.0	14.0	22.0	8.5
LCR 091.01501.00	51.0	52.0	29.0	61.0	75.8	71.0	2Xφ5.3*6.3	20.0	14.0	22.0	8.5
LCR 091.02001.00	51.0	52.0	29.0	61.0	75.8	71.0	2Xφ5.3*6.3	20.0	14.0	22.0	8.5
LCR 091.02501.00	100.0	84.0	40.0	95.0	150.6	105.0	4Xφ4.5*6.5	44.0	25.0	50.8	20.5
LCR 091.03001.00	100.0	84.0	40.0	95.0	150.6	105.0	4Xφ4.5*6.5	44.0	25.0	50.8	20.5
LCR 091.04001.00	100.0	84.0	40.0	95.0	150.6	105.0	4Xφ4.5*6.5	44.0	25.0	50.8	20.5

⚠ 1 inch=25.4mm (All dimensions in mm)。

