

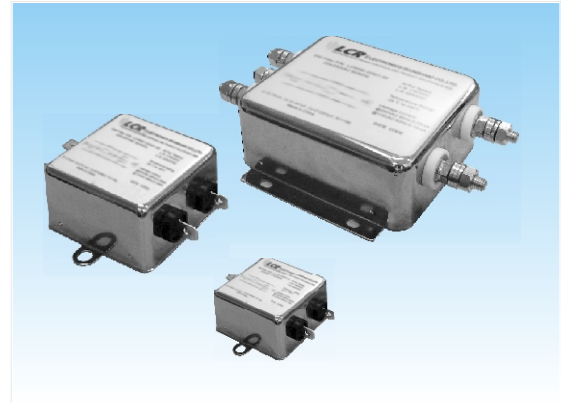
# 091M Series

Single Phase Single Stage High Performance Medical Filters



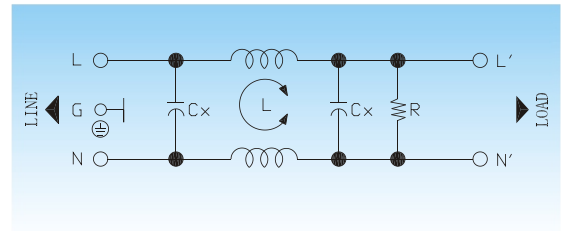
## Features

Low leakage current, high performance, power line filter. Fast on tabs and other termination options also available.



## Typical Applications

White goods with safety requirements, medical equipment, power supplies, controls and communication systems.



✓ Electrical Schematic



## Specifications :

<b>Rated Voltage Max. :</b>	250 VAC
<b>Rated Current:</b>	1- 40A @40°C
<b>Operating Frequency :</b>	50/60 Hz.
<b>Leakage Current :</b>	
@250VAC 50Hz	5 $\mu$ A MAX.
@115VAC 60Hz	2 $\mu$ A MAX.
<b>Hipot Rating (1minute) :</b>	
Line to Line:	1450 VDC
Line to Ground:	2250 VDC
<b>Climatic Category:</b>	25/85/21

Model No.	Rated Current(A) @40°C	Mechanical Diagram	Terminations	
			In	Out
LCR 091M.00101.00	1	A	Faston 6.35*0.8	Faston 6.35*0.8
LCR 091M.00301.00	3	A	Faston 6.35*0.8	Faston 6.35*0.8
LCR 091M.00601.00	6	A	Faston 6.35*0.8	Faston 6.35*0.8
LCR 091M.01001.00	10	A	Faston 6.35*0.8	Faston 6.35*0.8
LCR 091M.01501.00	15	A	Faston 6.35*0.8	Faston 6.35*0.8
LCR 091M.02001.00	20	A	Faston 6.35*0.8	Faston 6.35*0.8
LCR 091M.02501.00	25	B	M6 screw	M6 screw
LCR 091M.03001.00	30	B	M6 screw	M6 screw
LCR 091M.04001.00	40	B	M6 screw	M6 screw

⚠ Above filters can be customized upon request.



## 091M Series Insertion loss measured in a 50 ohms system



### Common Mode Insertion Loss (dB)

Frequency (MHz.)	0.05	0.1	0.15	0.5	1	5	10	30
<b>Filter P/N</b>								
LCR 091M.00101.00	21	27	31	41	48	50	50	45
LCR 091M.00301.00	21	27	31	41	48	50	50	45
LCR 091M.00601.00	16	21	25	35	42	40	40	40
LCR 091M.01001.00	13	19	22	33	39	35	35	35
LCR 091M.01501.00	10	16	19	29	35	30	30	30
LCR 091M.02001.00	10	16	19	29	35	30	30	30
LCR 091M.02501.00	8	13	16	27	33	30	30	30
LCR 091M.03001.00	5	10	13	23	30	28	28	28
LCR 091M.04001.00	5	10	13	23	30	28	28	28

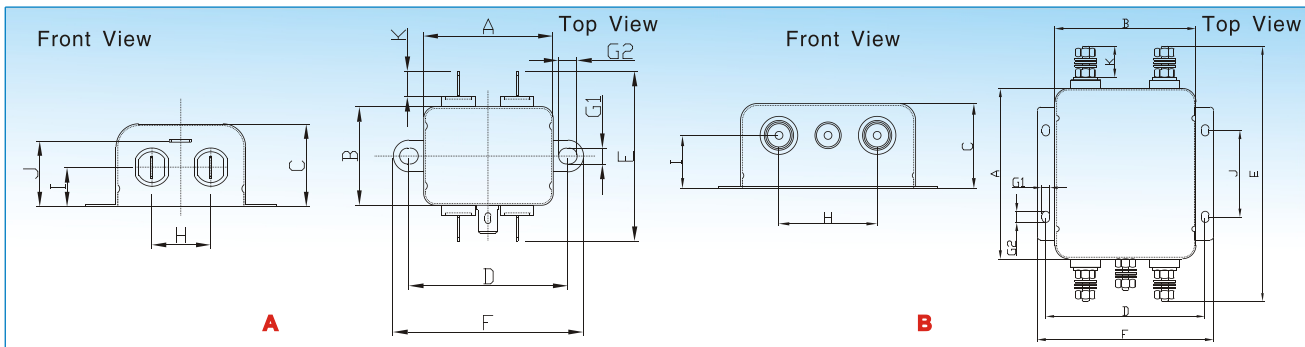


### Differential Mode Insertion Loss (dB)

Frequency (MHz.)	0.05	0.1	0.15	0.5	1	5	10	30
<b>Filter P/N</b>								
LCR 091M Series	5	10	13	23	30	35	35	35



### Mechanical Outlines:



### Mechanical Dimensions:

Model No.	A	B	C	D	E	F	G	H	I	J	K
LCR 091M.00101.00	44.0	33.0	29.0	54.0	56.8	64.0	2Xφ5.3*6.3	20.0	15.0	22.0	8.5
LCR 091M.00301.00	44.0	33.0	29.0	54.0	56.8	64.0	2Xφ5.3*6.3	20.0	15.0	22.0	8.5
LCR 091M.00601.00	44.0	33.0	29.0	54.0	56.8	64.0	2Xφ5.3*6.3	20.0	15.0	22.0	8.5
LCR 091M.01001.00	51.0	52.0	29.0	61.0	75.8	71.0	2Xφ5.3*6.3	20.0	14.0	22.0	8.5
LCR 091M.01501.00	51.0	52.0	29.0	61.0	75.8	71.0	2Xφ5.3*6.3	20.0	14.0	22.0	8.5
LCR 091M.02001.00	51.0	52.0	29.0	61.0	75.8	71.0	2Xφ5.3*6.3	20.0	14.0	22.0	8.5
LCR 091M.02501.00	100.0	84.0	40.0	95.0	150.6	105.0	4Xφ4.5*6.5	44.0	25.0	50.8	20.5
LCR 091M.03001.00	100.0	84.0	40.0	95.0	150.6	105.0	4Xφ4.5*6.5	44.0	25.0	50.8	20.5
LCR 091M.04001.00	100.0	84.0	40.0	95.0	150.6	105.0	4Xφ4.5*6.5	44.0	25.0	50.8	20.5

⚠ 1 inch=25.4mm (All dimensions in mm).