

092 Series

Single Phase Double Stage Filters



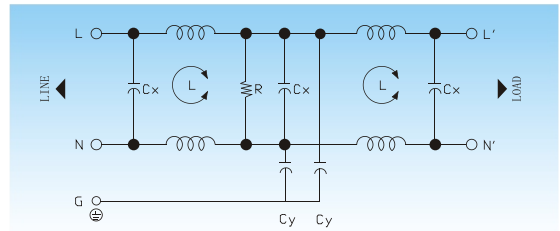
Features

High performance, wide range, double stage power line filters.



Typical Applications

White goods with frequency inverters and inverter based control systems.



✓ Electrical Schematic



Specifications :

Rated Voltage Max. :	250 VAC
Rated Current:	1- 30A @40°C
Operating Frequency :	50/60 Hz.
Leakage Current :	
@250VAC 60Hz	0.44 mA MAX.
@115VAC 60Hz	0.20 mA MAX.
Hipot Rating (1minute) :	
Line to Line:	1700 VDC
Line to Ground:	2250 VDC
Climatic Category:	25/85/21

Model No.	Rated Current(A) @40°C	Mechanical Diagram	Terminations	
			In	Out
LCR 092.00121.00	1	A	Faston 6.35*0.8	Faston 6.35*0.8
LCR 092.00321.00	3	A	Faston 6.35*0.8	Faston 6.35*0.8
LCR 092.00721.00	7	A	Faston 6.35*0.8	Faston 6.35*0.8
LCR 092.01021.00	10	A	Faston 6.35*0.8	Faston 6.35*0.8
LCR 092.01521.00	15	A	Faston 6.35*0.8	Faston 6.35*0.8
LCR 092.02021.00	20	B	M6 screw	M6 screw
LCR 092.03021.00	30	C	M6 screw	M6 screw

⚠ Above filters can be customized upon request.



092 Series Insertion loss measured in a 50 ohms system



Common Mode Insertion Loss (dB)

Frequency (MHz.)	0.05	0.1	0.15	0.5	1	5	10	30
Filter P/N								
LCR 092.00121.00	45	70	80	80	80	80	78	65
LCR 092.00321.00	25	58	55	80	76	60	55	45
LCR 092.00721.00	12	25	45	70	80	66	60	60
LCR 092.01021.00	10	10	30	65	79	72	66	57
LCR 092.01521.00	5	10	20	55	70	80	80	70
LCR 092.02021.00	5	10	20	55	70	65	80	62
LCR 092.03021.00	5	10	20	55	70	65	80	43

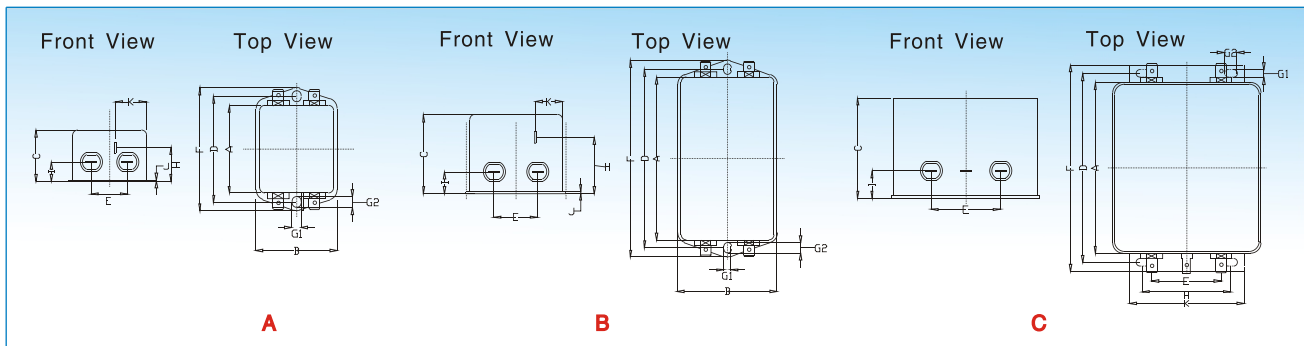


Differential Mode Insertion Loss (dB)

Frequency (MHz.)	0.05	0.1	0.15	0.5	1	5	10	30
Filter P/N								
LCR 092.00121.00	10	15	20	70	50	65	70	60
LCR 092.00321.00	10	15	20	70	50	65	70	60
LCR 092.00721.00	10	15	20	70	50	65	70	60
LCR 092.01021.00	15	20	23	45	60	55	55	60
LCR 092.01521.00	15	20	23	45	50	65	55	60
LCR 092.02021.00	20	25	30	60	65	70	72	60
LCR 092.03021.00	20	25	30	50	65	70	75	60



Mechanical Outlines:



Mechanical Dimensions:

Model No.	A	B	C	D	E	F	G	H	I	J	K
LCR 092.00121.00	50.5	46.6	30.3	62.0	21.0	71.0	5.3*6.3	19.3	7.8	0.6	20.1
LCR 092.00321.00	50.5	46.6	30.3	62.0	21.0	71.0	5.3*6.3	19.3	7.8	0.6	20.1
LCR 092.00721.00	50.5	46.6	30.3	62.0	21.0	71.0	5.3*6.3	19.3	7.8	0.6	20.1
LCR 092.01021.00	64.8	54.0	30.3	75.0	27.0	85.0	5.3*6.3	20.8	12.3	0.6	19.9
LCR 092.01521.00	64.8	54.0	40.3	75.0	27.0	85.0	5.3*6.3	29.8	12.3	0.6	11.4
LCR 092.02021.00	94.0	57.5	45.4	103.0	25.0	113.5	4.4*6.0	32.4	12.4	1.0	15.5
LCR 092.03021.00	100.0	85.5	57.6	109.0	40.0	119.0	4.4*7.4	51.0	15.6	1.0	66.0

⚠ 1 inch=25.4mm (All dimensions in mm).

返回

Back to Table of Content

