

092M Series

Single Phase Double Stage Medical Filters



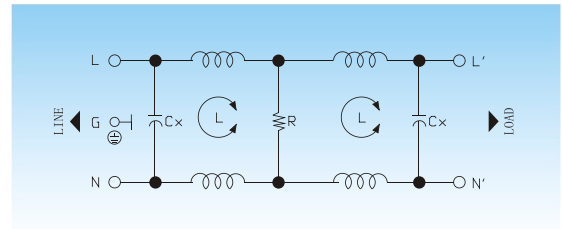
Features

Low leakage current, high performance, wide range, double stage power line filter.



Typical Applications

Medical equipment, white goods with safety requirements and frequency inverter based controls and equipment.



✓ Electrical Schematic



Specifications :

Rated Voltage Max. :	250 VAC
Rated Current:	1- 30A @40°C
Operating Frequency :	50/60 Hz.
Leakage Current :	
@250VAC 60Hz	10 μA MAX.
@115VAC 60Hz	5 μA MAX.
Hipot Rating (1minute) :	
Line to Line:	1700 VDC
Line to Ground:	2000 VDC
Climatic Category:	25/85/21

Model No.	Rated Current(A) @40°C	Mechanical Diagram	Terminations	
			In	Out
LCR 092M.00121.00	1	A	Faston 6.35*0.8	Faston 6.35*0.8
LCR 092M.00321.00	3	A	Faston 6.35*0.8	Faston 6.35*0.8
LCR 092M.00721.00	7	A	Faston 6.35*0.8	Faston 6.35*0.8
LCR 092M.01021.00	10	A	Faston 6.35*0.8	Faston 6.35*0.8
LCR 092M.01521.00	15	A	Faston 6.35*0.8	Faston 6.35*0.8
LCR 092M.02021.00	20	B	M6 screw	M6 screw
LCR 092M.03021.00	30	C	M6 screw	M6 screw

⚠ Above filters can be customized upon request.



092M Series Insertion loss measured in a 50 ohms system



Common Mode Insertion Loss (dB)

Frequency(MHz.)	0.05	0.1	0.15	0.5	1	5	10	30
Filter P/N								
LCR 092M.00121.00	45	70	80	80	80	80	78	65
LCR 092M.00321.00	25	58	55	80	76	60	55	45
LCR 092M.00721.00	12	25	45	70	80	66	60	60
LCR 092M.01021.00	10	10	30	65	79	72	66	57
LCR 092M.01521.00	5	10	20	55	70	80	80	70
LCR 092M.02021.00	5	10	20	55	70	65	80	62
LCR 092M.03021.00	5	10	20	55	70	65	80	43

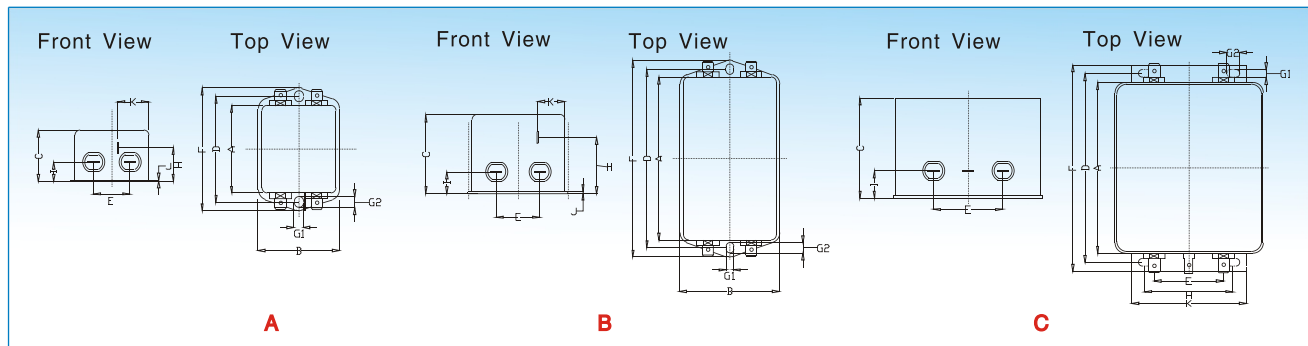


Differential Mode Insertion Loss (dB)

Frequency(MHz.)	0.05	0.1	0.15	0.5	1	5	10	30
Filter P/N								
LCR 092M.00121.00	10	15	20	70	50	65	70	60
LCR 092M.00321.00	10	15	20	70	50	65	70	60
LCR 092M.00721.00	10	15	20	70	50	65	70	60
LCR 092M.01021.00	15	20	23	45	60	55	55	60
LCR 092M.01521.00	15	20	23	45	50	65	55	60
LCR 092M.02021.00	20	25	30	60	65	70	72	60
LCR 092M.03021.00	20	25	30	50	65	70	75	60



Mechanical Outlines:



Mechanical Dimensions:

Model No.	A	B	C	D	E	F	G	H	I	J	K
LCR 092M.00121.00	50.5	46.6	30.3	61.0	21.0	71.0	5.3*6.3	19.3	10.8	0.6	20.1
LCR 092M.00321.00	50.5	46.6	30.3	61.0	21.0	71.0	5.3*6.3	19.3	10.8	0.6	20.1
LCR 092M.00621.00	50.5	46.6	30.3	61.0	21.0	71.0	5.3*6.3	19.3	10.8	0.6	20.1
LCR 092M.01021.00	64.8	54.0	30.3	75.0	27.0	85.0	5.3*6.3	20.8	12.3	0.6	19.9
LCR 092M.01621.00	64.8	54.0	40.3	75.0	27.0	85.0	5.3*6.3	29.8	12.3	0.6	11.4
LCR 092M.02021.00	94.0	57.5	45.4	103.0	25.0	113.5	4.4*6.0	32.4	12.4	1.0	15.5
LCR 092M.03021.00	98.5	85.5	57.6	109.0	40.0	119.0	4.4*7.4	51.0	15.6	1.0	66.0

⚠ 1 inch=25.4mm (All dimensions in mm).