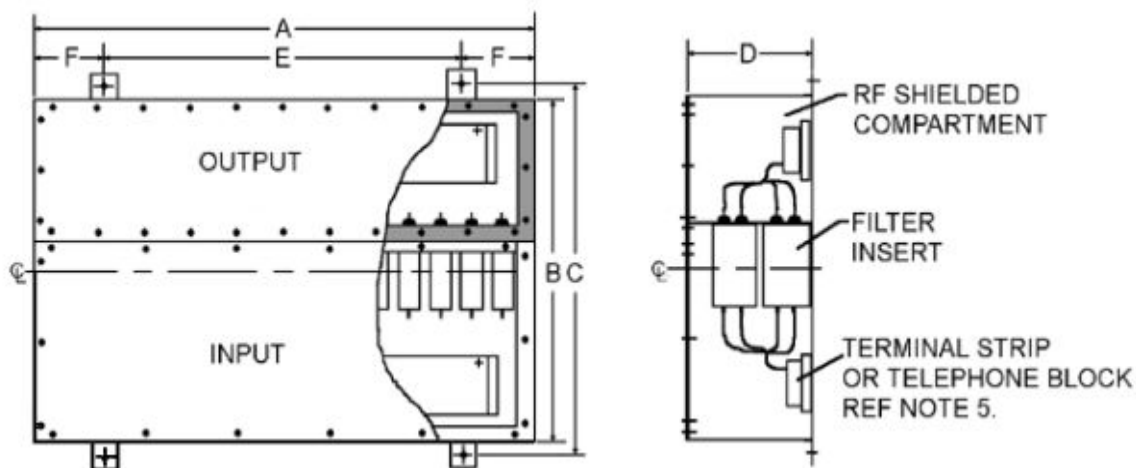


F15000 Series

Communication Filter Enclosures

Voice-Data-Control-Line for Security and Tempest Applications



Part Number	Filter Pairs	Enclosure Dimensions (inch)					
		A	B	C	D	E	F
F15000-10	10	10.5	19.0	20.6	7.0	7.5	1.5
F15000-20	20	19.5	19.0	20.6	7.0	11.5	4.0
F15000-30	30	28.5	19.0	20.6	7.0	20.5	4.0
F15000-40	40	37.5	19.0	20.6	7.0	29.5	4.0
F15000-50	50	46.5	19.0	20.6	7.0	38.5	4.0
F15000-100	100	31.5	35.5	37.1	10.0	23.5	4.0
F15000-150	150	46.5	42.0	43.6	10.0	38.5	4.0
F15000-200	200	48.0	42.0	43.6	15.0	40.0	4.0
F15000-300	300	65.0	42.0	43.6	15.0	57.0	4.0
F15000-400	400	64.0	48.0	43.6	10.0	56.0	4.0
F15000-500	500	77.0	48.0	49.6	18.5	67.0	4.0

General Specifications

- Enclosures are modified NEMA, cold-rolled, welded steel construction.
- Filters are available pre-wired to terminals.
- Output compartment is fully environmentally gasketed for EMI shielding effectiveness to NSA, MIL-STD-285, S.C.I.F. and Tempest
- The cabinet finish is Zinc Chromate plating per ASTM-B633 with Gray Enamel.
- Surge Suppressors, Type N Test Penetrations, Terminal Strip or Telephone Block are available as options.
- Typical system may consist of any combination of telecommunications, control and data line filter inserts.
- Communication Filter enclosures also available with optional EMP, surge and spike suppression networks.
- LCR Electronics can tailor custom enclosures to meet your unique specifications